



## DOT

---

Small, Efficient, Unmistake: the LED low voltage is slim, small and flexible. The ideal all-rounder for all applications, such as office, home or retail shop.



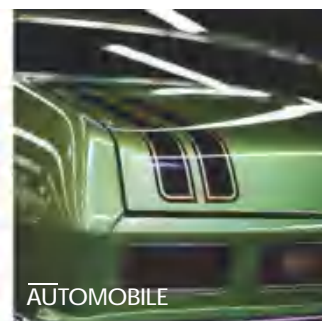
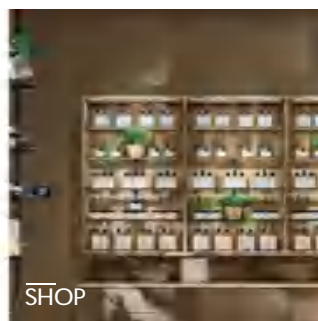
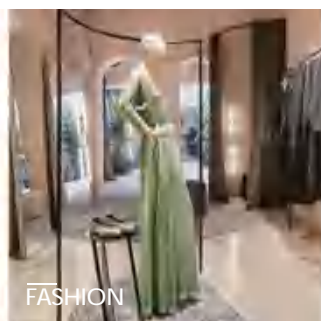
**SLIM SIZE**  
The track system is more slim in low voltage




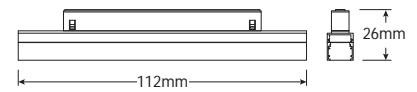
**EASY INSTALLATION**



**RELIABLE**  
Branded component ensure the lighting have reliable quality.



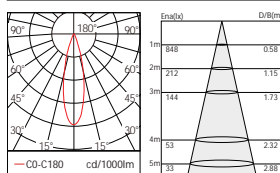
Product series	DOT
Application areas	Accent lighting
Mounting	Power Track
Lighting technology	LED
LED Luminous Flux Class	120LM/W
Light colour White	2700K, 3000K, 3500K, 4000K, 5000K
Cooling	Passive
Supply unit	Driver Intergrated
Luminaire colour	RAL 9005 jet black RAL 9016 traffic white Special colours on request
Surface	Structure powder-coated
Nominal voltage	DC48V
Lighting controls	On Request
Weight	0.23kg
Test seal	




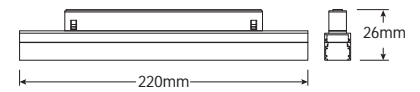
### Code composition/ Composizione del codice

Model	Power	Light flux	Size	Beam Angle	Voltage	CRI	FUNTION
GMT101	6W	80LM/W	L112*W23*H26	24°	48V	90	ON/OFF DIM/DALI

24°-3000K-CRI90



Product series	DOT
Application areas	Accent lighting
Mounting	Power Track
Lighting technology	LED
LED Luminous Flux Class	120LM/W
Light colour White	2700K, 3000K, 3500K, 4000K, 5000K
Cooling	Passive
Supply unit	Driver Intergrated
Luminaire colour	RAL 9005 jet black RAL 9016 traffic white Special colours on request
Surface	Structure powder-coated
Nominal voltage	DC48V
Lighting controls	On Request
Weight	0.26kg
Test seal	



### Code composition/ Composizione del codice

Model	Power	Light flux	Size	Beam Angle	Voltage	CRI	FUNTION
GMT101	12W	80LM/W	L220*W23*H26	24°	48V	90	ON/OFF DIM/DALI

24°-3000K-CRI90

