





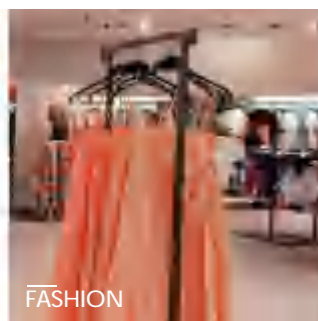
SLITE


Ultra-compact and optically refined, this series delivers crisp, uniform illumination for cabinets and display units. Slim profiles (<30mm depth) allow seamless integration into tight spaces, while precision lenses ensure minimal glare (UGR<16) and high color accuracy (CRI>90). Energy-efficient LEDs (100lm/W) with 2700K-4000K adjustability adapt to ambient needs. Durable aluminum housings resist heat and wear, and tool-free installation suits retrofit or new builds.

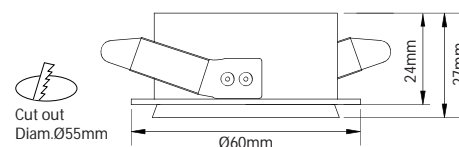
 **WIDELY ROTATION**
355°turning range , 180°swiver range

 **FLEXIBLE INSTALLATION**

 **RA**
High CRI up to 97



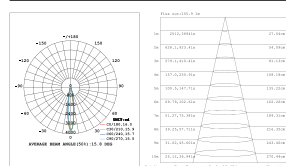
Product series	SLITE-X
Application areas	Accent lighting
Pan/tilt range	Fixed
Mounting	Recessed
Lighting technology	LED
LED Luminous Flux Class	120LM/W
Light colour White	2700K, 3000K, 3000K - Efficient White, 3000 K - Brilliant Colour,3500K, 4000K
Cooling	Passive
Supply unit	Driver Intergrated
Luminaire colour	RAL 9005 jet black RAL 9006 white aluminium RAL 9016 traffic white Special colours on request
Surface	Structure powder-coated
Nominal voltage	DC24V
Lighting controls	On Request
Weight	Approx.0.1kg
Test seal	



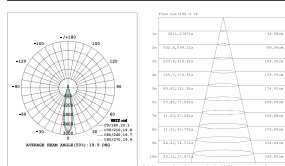
Code composition/ Composizione del codice

Model	Light flux	Power	Cut-off size	Size	Beam Angle	CRI	Function
GMP001	30-40LM/W	5W	Ø55mm	Ø60*27mm	15/20/30/60D	90	ON/OFF DIM/DALI/0-10V ZIGBEE

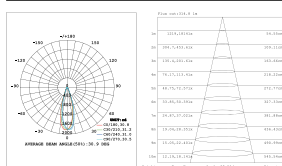
15°-3000K-CRI90




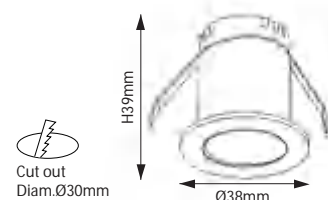
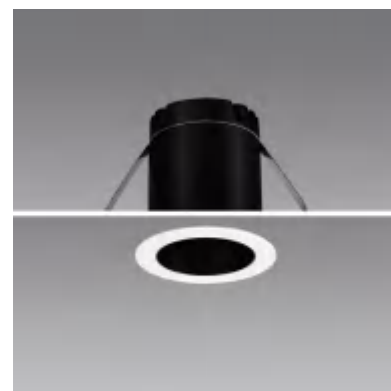
20°-3000K-CRI90



30°-3000K-CRI90



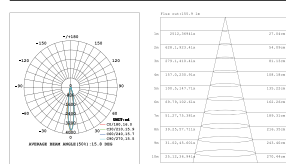
Product series	SLITE-D
Application areas	Accent lighting
Pan/tilt range	Fixed
Mounting	Recessed
Lighting technology	LED
LED Luminous Flux Class	120LM/W
Light colour White	2700K, 3000K, 3000K - Efficient White, 3000 K - Brilliant Colour,3500K, 4000K
Cooling	Passive
Supply unit	Driver Intergrated
Luminaire colour	RAL 9005 jet black RAL 9006 white aluminium RAL 9016 traffic white Special colours on request
Surface	Structure powder-coated
Nominal voltage	DC24V
Lighting controls	On Request
Weight	Approx.0.08kg
Test seal	



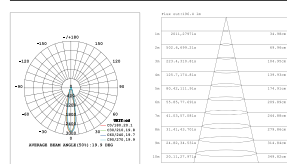
Code composition/ Composizione del codice

Model	Light flux	Power	Cut-off size	Size	Beam Angle	CRI	Function
GMP001	30-40LM/W	3W	Ø30mm	Ø38*39mm	15D/24D	90	ON/OFF DIM/DALI/0-10V ZIGBEE

15°-3000K-CRI90



20°-3000K-CRI90



30°-3000K-CRI90

