



FENIX

FENIX ,recessed model , can change the angle around 120 degree, oval light beam anlge ,low UGR. more elegant suitable for showroom, Gallery or Home .



STRUCTURE

Machined aluminum tube offered with textured black, white finish. FENIX can be specified with 2 baffle finishes: white or black.



OPTIC

Designed with narrow or medium beam angle, to meet all applications. Optical choice of clear, frosted or honeycomb lenses available.



RA

High CRI up to 97

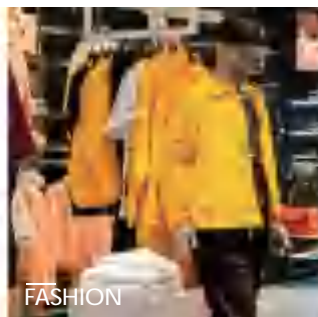


Reliable

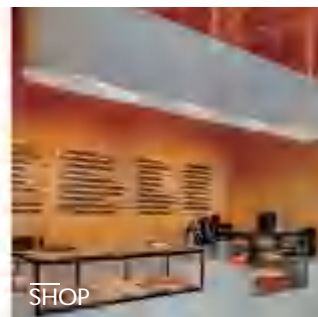
Branded component ensure the lighting have reliable quality.



FOOD



FASHION

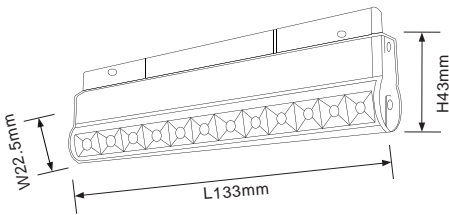


SHOP



AUTOMOBILE

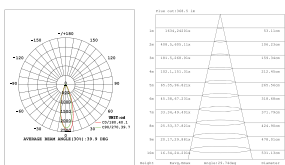
Product series	FENIX
Application areas	Accent lighting
Mounting	Power Track
Lighting technology	LED
LED Luminous Flux Class	120LM/W
Light colour White	2700K,3000K 3500K, 4000K,5000K
Cooling	Passive
Supply unit	Driver Intergrated
Luminaire colour	RAL 9005 jet black RAL 9016 traffic white Special colours on request
Surface	Structure powder-coated
Nominal voltage	48V
Lighting controls	On Request
Weight	Approx.0.16kg
Test seal	<div><div>EAC</div><div>CE</div><div>IP20</div><div></div><div></div><div></div><div>TM-21 100,000</div></div>



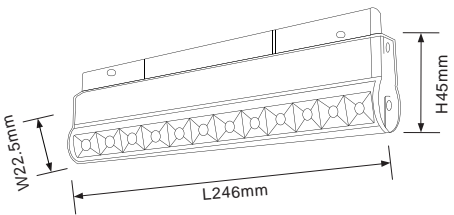
Code composition/ Composizione del codice

Model	Power	Light flux	Size	Beam Angle	CRI	Function
GMT202	6W	80LM/W	L133*W22.5* H43	15°/24°/36°	90/98	ON/OFF DIM/DALI/0-10V ZIGBEE

36°-3000K-CRI90



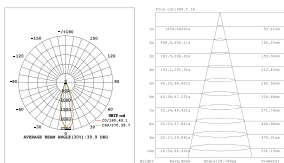
Product series	FENIX
Application areas	Accent lighting
Mounting	Power Track
Lighting technology	LED
LED Luminous Flux Class	120LM/W
Light colour White	2700K,3000K 3500K, 4000K,5000K
Cooling	Passive
Supply unit	Driver Intergrated
Luminaire colour	RAL 9005 jet black RAL 9016 traffic white Special colours on request
Surface	Structure powder-coated
Nominal voltage	48V
Lighting controls	On Request
Weight	Approx.0.19kg
Test seal	<div> <div>ERL</div> <div>CE</div> <div>IP20</div> <div></div> <div></div> <div>SDCM < 3</div> <div>TM-21 100,000</div> </div>



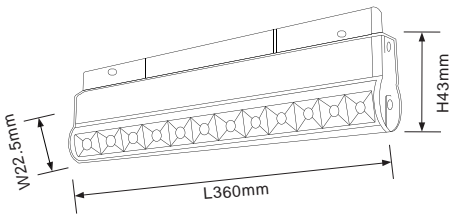
Code composition/ Composizione del codice

Model	Power	Light flux	Size	Beam Angle	CRI	Function
GMT202	6W	80LM/W	L246*W22.5* H45	15°/24°/36°	90/98	ON/OFF DIM/DALI/0-10V ZIGBEE

36°-3000K-CRI90



Product series	FENIX
Application areas	Accent lighting
Mounting	Power Track
Lighting technology	LED
LED Luminous Flux Class	120LM/W
Light colour White	2700K,3000K 3500K, 4000K,5000K
Cooling	Passive
Supply unit	Driver Intergrated
Luminaire colour	RAL 9005 jet black RAL 9016 traffic white Special colours on request
Surface	Structure powder-coated
Nominal voltage	48V
Lighting controls	On Request
Weight	Approx.0.24kg
Test seal	<div><div>ERL</div><div>CE</div><div>IP20</div><div></div><div></div><div></div><div>TM-21 100,000</div></div>



Code composition/ Composizione del codice

Model	Power	Light flux	Size	Beam Angle	CRI	Function
GMT202	18W	80LM/W	L360*W22.5*H43	15°/24°/36°	90/98	ON/OFF DIM/DALI/0-10V ZIGBEE

36°-3000K-CRI90

